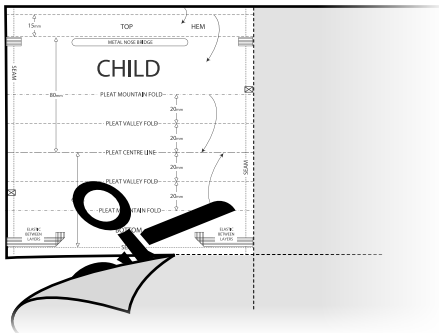
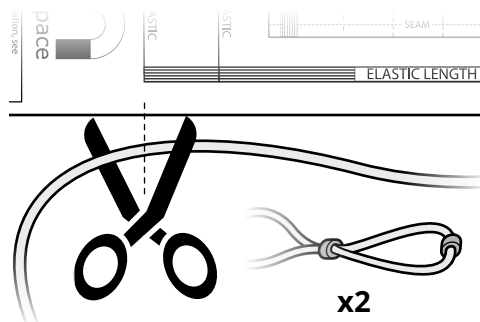




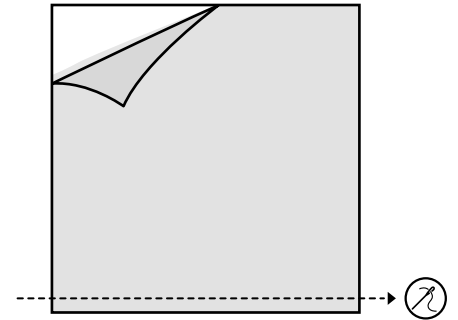
1 CUT 2 FABRIC SQUARES
(one light, one dark)



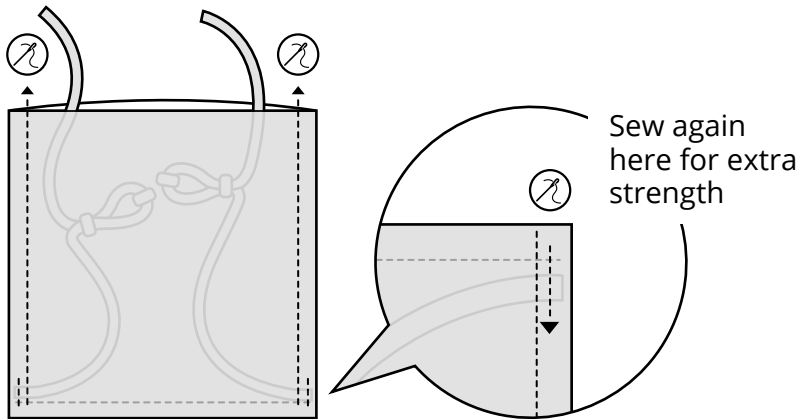
2 CUT 2 LENGTHS OF ELASTIC
(one green, one orange)
AND THREAD BEADS



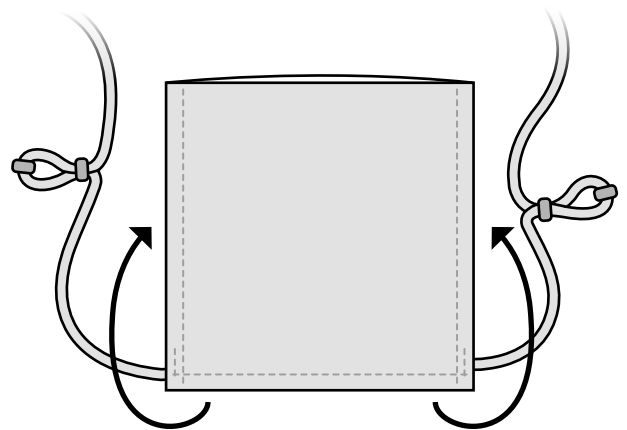
3 STITCH ALONG BOTTOM SEAM OF LAYERED FABRIC



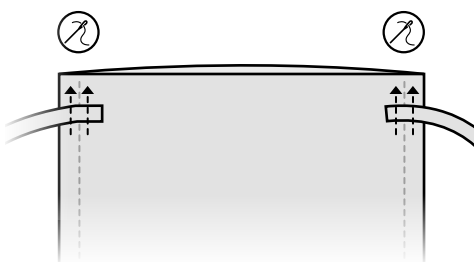
4 ATTACH ELASTIC TIES AND SEW SIDES
Align elastic to seam along bottom, between the two sheets of fabric, then sew along the side seams



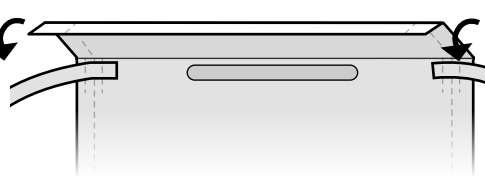
5 TURN INSIDE OUT



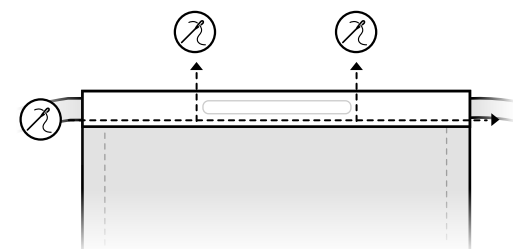
6 STITCH ELASTIC TIES 20mm FROM THE TOP



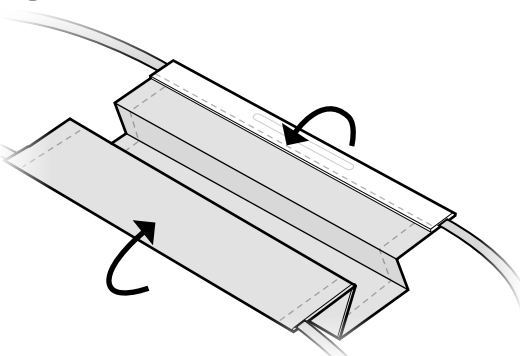
7 ADD NOSE BRIDGE
20mm from top edge.
Fold over 5mm, then another 15mm to form a double-fold hem



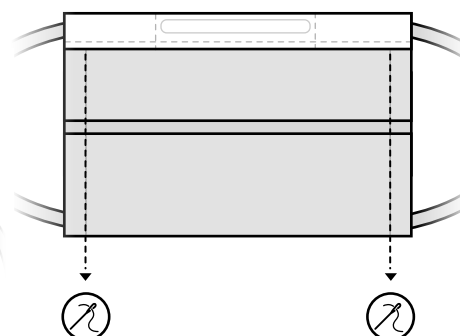
8 SEW ALONG DOUBLE HEM, THEN SEW IN NOSE BRIDGE



9 FOLD IN PLEATS



10 SEW PLEATS



11 WEAR AND SHARE!

